



REACT
PUBLIC PERFORMANCES

PRESENTATION

UP & DOWN



AN ESCALATOR PERFORMANCE

Is this a machine? Is this an assembly line? A playground?

What is this strange place in between?

Every day people face these two stories high metal monsters, without blinking, fearless. Our minds turn these futuristic dragons into little ponies that we ride to get to the next clothes department store. Through everyday practice we master these huge, gigantic machines in the same way we master a walk down the park. Today everyone has an escalator driver's license.

Up & Down is a performance where we play with the rules and possibilities of the physical and social space of an escalator and the pictures you might, or might not, see there. By using and mixing the common and expected elements of the specific site, we investigate how we can create uncommon and extraordinary situations and reactions.

Through dance, movement, acrobatics and playfulness, we question the rules, behaviors and logic of an escalator:

What would happen if the up would become down and the down would become still?

With humor, we open the space for reflection and discussion on routines and paths, life facilitators and how to deal with the unexpected in everyday life.

Here we wait. Without walking, here we go. Up and down.

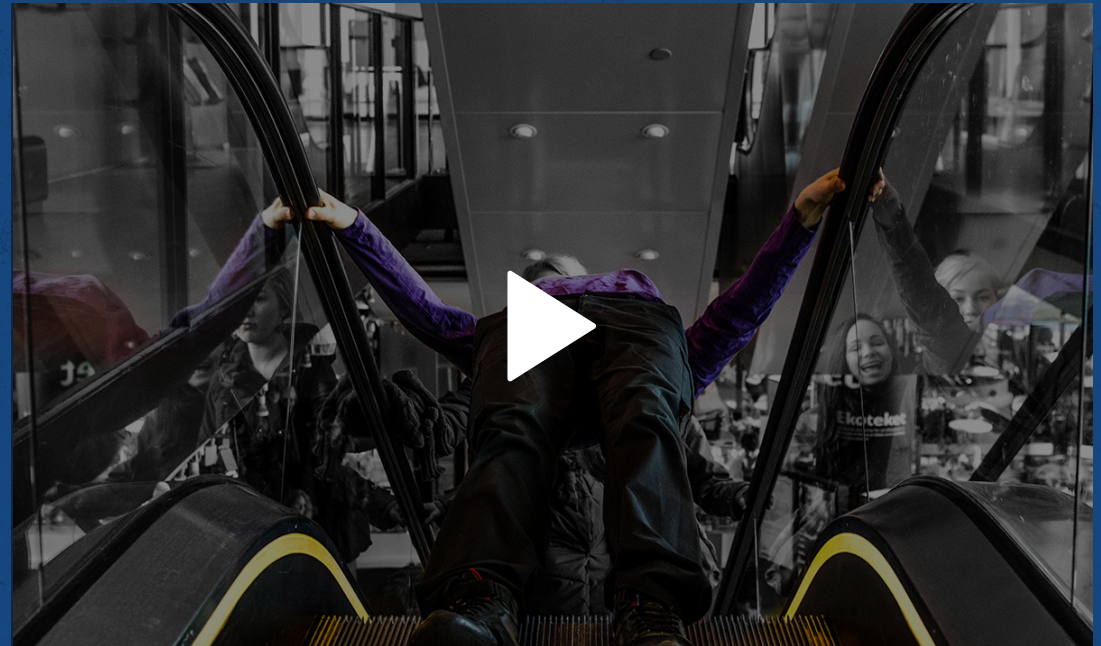
Forever going, always staying...



"Up & Down" is an escalator performance by React Public Performances, where we test the possibilities of the relation between audience and performers, welcoming and inviting interactions.

The whole performance takes place up and down an escalator stair, without blocking its usage for the public. It starts with some "invisible" actions and builds up to an interactive piece with a big finale.

Premiered at Move be Moved festival 2013 (Stockholm, Sweden)



www.reactperformances.com/up-and-down/

WWW.REACTPERFORMANCES.COM

GENRE

Public space performance

DURATION

Approximately 25 min.

NUMBER OF ARTISTS

5

AUDIENCE SIZE

Depending on the space restrictions.
Maximum 200 people.

SPACE

This performance needs an automatic escalator stairs (up and down), it is very adaptable to the specific space at hand. Suggested length of the escalator is one floor, but it can be adapted to fit other lengths.

SOUND

No speakers or amplification needed.

LIGHT

No special light is needed but the performing space should have good normal light or some extra lights might be needed

PREPARATION AND RIGGING TIME

No rigging is needed. Due to the nature of the piece some elements have to be tried in the actual escalator where the performance will take place in order to adapt to it. 3 hours is the minimum time for this.

NUMBER OF PERFORMANCES

Maximum 3 in one day, with a minimum of 15 minutes in between



REACT

PUBLIC PERFORMANCES

React is a performance company, based in Sweden, that aims to reach people directly by performing in public spaces, therefore opening art to new audiences. Dance, movement, theatre and circus can be seen as the main artistic tools used to create playful, creative and interactive performances.

The main mission of React Public Performances is to raise questions about the rules shaping behavior in public spaces. The aim is to create situations that give an opportunity for people to question both the limits of these public spaces and how they follow the spoken and unspoken rules. We want our work to be an entry point into performing arts for new audiences as well as an original experience for expert ones.

React is also an intercultural company with members originally from Sweden, Finland, France and Portugal.

WWW.REACTPERFORMANCES.COM

